

THIS INSTRUMENT PREPARED BY  
 DAVID P. LINDLEY  
 OF  
**CAULFIELD and WHEELER, INC.**  
 SURVEYORS - ENGINEERS - PLANNERS  
 7301-A WEST PALMETTO PARK ROAD, SUITE 100A  
 BOCA RATON, FLORIDA 33433 - (561)392-1991  
 FEBRUARY - 2008

0931-003

# ISOLA BELLA ISLES - PHASE I

NICOLA, PUD  
 A PLANNED UNIT DEVELOPMENT BEING A REPLAT OF A PORTION OF THE AMENDED PLAT OF THE MARY A. LYMAN ET AL,  
 SUBDIVISION OF SECTION 12, TOWNSHIP 45 SOUTH, RANGE 42 EAST, ACCORDING TO THE PLAT THEREOF,  
 AS RECORDED IN PLAT BOOK 9, PAGE 74, PUBLIC RECORDS OF PALM BEACH COUNTY, FLORIDA

MATCH LINE SHEET 2 OF 4

121

STATE OF FLORIDA  
 COUNTY OF PALM BEACH  
 THIS PLAT WAS FILED FOR  
 RECORD AT \_\_\_\_\_ M.  
 THIS \_\_\_\_\_ DAY OF \_\_\_\_\_  
 A.D. 200\_\_\_\_ AND DULY RECORDED  
 IN PLAT BOOK \_\_\_\_\_ ON  
 PAGES \_\_\_\_\_ AND \_\_\_\_\_  
 SHARON R. BOCK  
 CLERK AND COMPTROLLER

BY: \_\_\_\_\_  
 DEPUTY CLERK

SHEET 3 OF 4

N.W. 1/2 OF THE N.W. 1/4,  
 OF THE N.W. 1/4 OF SECTION 12-45-42  
 MARY A. LYMAN SUBDIVISION  
 (PLAT BOOK 9, PAGE 74)

WEST LINE OF THE E. 1/2  
 OF THE N.W. 1/4, OF THE N.W. 1/4  
 OF SECTION 12-45-42  
 AMENDED PLAT OF MARY A. LYMAN  
 (PLAT BOOK 9, PAGE 74)

SET PRM  
 N 813180.75  
 E 943609.81

N01°10'08"E  
 1317.93'

TRACT 14  
 MARY A. LYMAN SUBDIVISION  
 (PLAT BOOK 9, PAGE 74)

PARCEL A

12' F.P.L. EASEMENT  
 (O.R.B. 2295, PAGE 1231)

TRACT 2  
 MARY A. LYMAN SUBDIVISION  
 (PLAT BOOK 9, PAGE 74)

N89°35'07"W NORTH LINE OF TRACT 11 376.64'  
 N.E. CORNER OF TRACT 11  
 MARY A. LYMAN SUBDIVISION  
 SET PRM  
 N 813203.28  
 E 944361.87  
 N.E. CORNER OF TRACT 11  
 MARY A. LYMAN SUBDIVISION  
 SET PRM  
 N 813200.56  
 E 944738.51

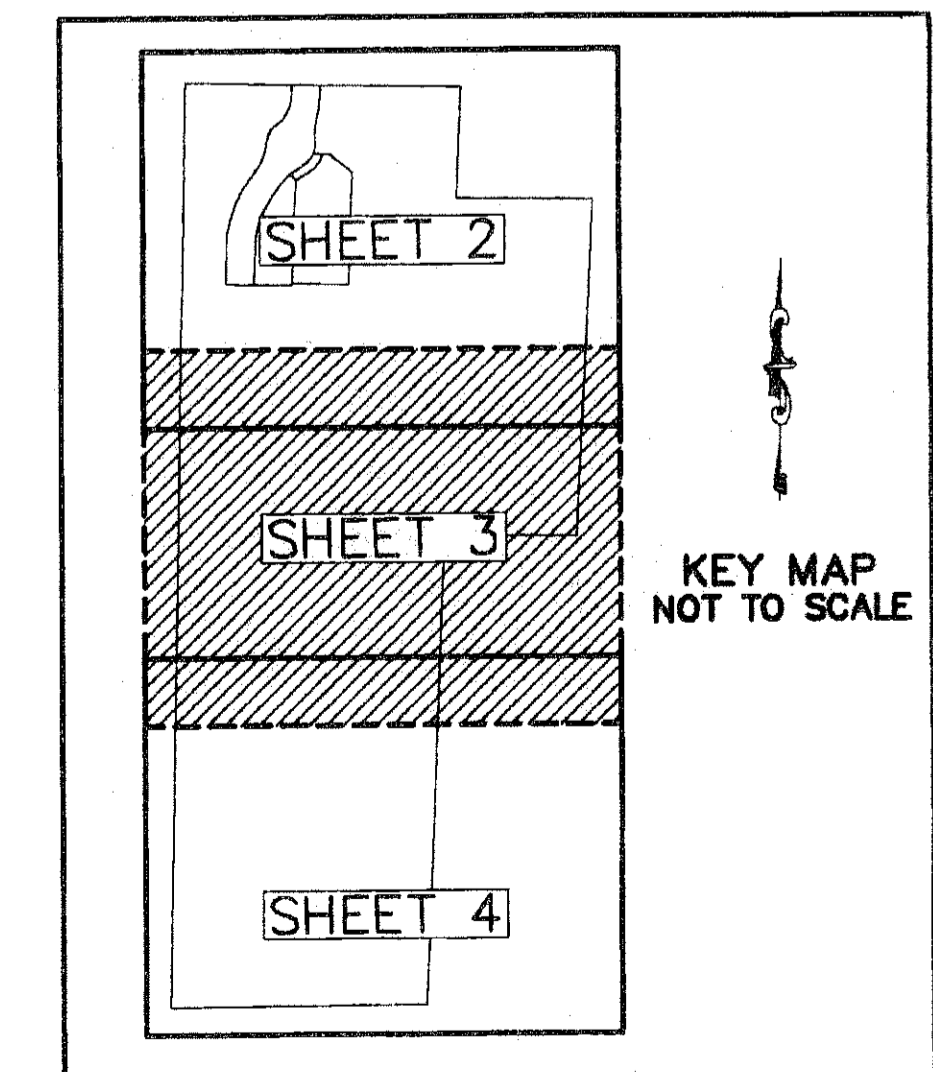
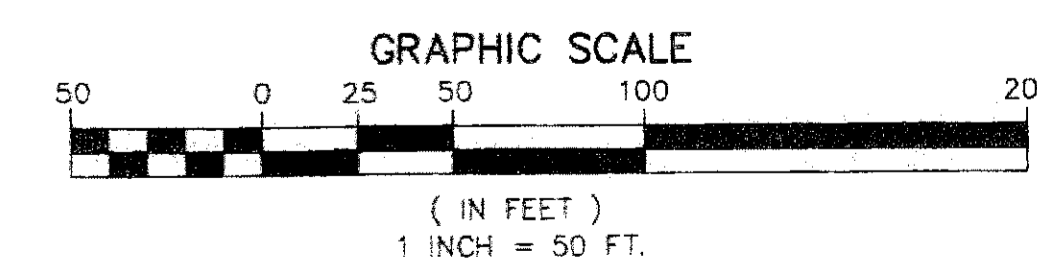
TRACT 11  
 MARY A. LYMAN SUBDIVISION  
 (PLAT BOOK 9, PAGE 74)

TRACT 10  
 MARY A. LYMAN SUBDIVISION  
 (PLAT BOOK 9, PAGE 74)

1336.39'

WEST LINE OF TRACT 11

S02°19'29"W



MATCH LINE SHEET 4 OF 4